

**CIHM
Microfiche
Series
(Monographs)**

**ICMH
Collection de
microfiches
(monographies)**



Canadian Institute for Historical Microreproductions / Institut canadien de microreproductions historiques

© 1996

Technical and Bibliographic Notes / Notes technique et bibliographiques

The Institute has attempted to obtain the best original copy available for filming. Features of this copy which may be bibliographically unique, which may alter any of the images in the reproduction, or which may significantly change the usual method of filming are checked below.

- Coloured covers / Couverture de couleur
- Covers damaged / Couverture endommagée
- Covers restored and/or laminated / Couverture restaurée et/ou pelliculée
- Cover title missing / Le titre de couverture manque
- Coloured maps / Cartes géographiques en couleur
- Coloured ink (i.e. other than blue or black) / Encre de couleur (i.e. autre que bleue ou noire)
- Coloured plates and/or illustrations / Planches et/ou illustrations en couleur
- Bound with other material / Relié avec d'autres documents
- Only edition available / Seule édition disponible
- Tight binding may cause shadows or distortion along interior margin / La reliure serrée peut causer de l'ombre ou de la distorsion le long de la marge intérieure.
- Blank leaves added during restorations may appear within the text. Whenever possible, these have been omitted from filming / Il se peut que certaines pages blanches ajoutées lors d'une restauration apparaissent dans le texte, mais, lorsque cela était possible, ces pages n'ont pas été filmées.
- Additional comments / Commentaires supplémentaires:

L'Institut a microfilmé le meilleur exemplaire qu'il lui a été possible de se procurer. Les détails de cet exemplaire qui sont peut-être uniques du point de vue bibliographique, qui peuvent modifier une image reproduite, ou qui peuvent exiger une modifications dans la méthode normale de filmage sont indiqués ci-dessous.

- Coloured pages / Pages de couleur
- Pages damaged / Pages endommagées
- Pages restored and/or laminated / Pages restaurées et/ou pelliculées
- Pages discoloured, stained or foxed / Pages décolorées, tachetées ou piquées
- Pages detached / Pages détachées
- Showthrough / Transparence
- Quality of print varies / Qualité inégale de l'impression
- Includes supplementary material / Comprend du matériel supplémentaire
- Pages wholly or partially obscured by errata slips, tissues, etc., have been refilmed to ensure the best possible image / Les pages totalement ou partiellement obscurcies par un feuillet d'errata, une pelure, etc., ont été filmées à nouveau de façon à obtenir la meilleure image possible.
- Opposing pages with varying colouration or discolourations are filmed twice to ensure the best possible image / Les pages s'opposant ayant des colorations variables ou des décolorations sont filmées deux fois afin d'obtenir la meilleur image possible.

This item is filmed at the reduction ratio checked below /
Ce document est filmé au taux de réduction indiqué ci-dessous.

	10X		14X		18X		22X		26X		30X
	12X		16X		20X		24X		28X		32X
							✓				

The copy filmed here has been reproduced thanks to the generosity of:

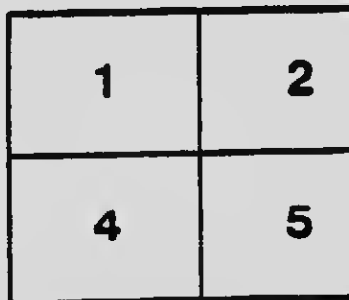
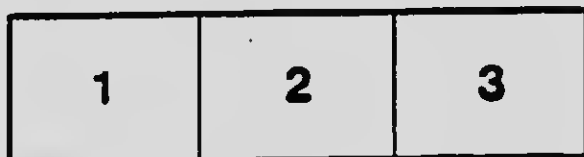
National Library of Canada

The images appearing here are the best quality possible considering the condition and legibility of the original copy and in keeping with the filming contract specifications.

Original copies in printed paper covers are filmed beginning with the front cover and ending on the last page with a printed or illustrated impression, or the back cover when appropriate. All other original copies are filmed beginning on the first page with a printed or illustrated impression, and ending on the last page with a printed or illustrated impression.

The last recorded frame on each microfiche shell contain the symbol \rightarrow (meaning "CONTINUED"), or the symbol ∇ (meaning "END"), whichever applies.

Maps, plates, charts, etc., may be filmed at different reduction ratios. Those too large to be entirely included in one exposure are filmed beginning in the upper left hand corner, left to right and top to bottom, as many frames as required. The following diagrams illustrate the method:



L'exemplaire filmé fut reproduit grâce à la générosité de:

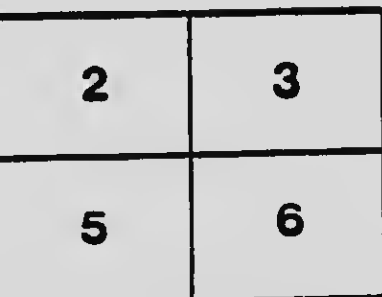
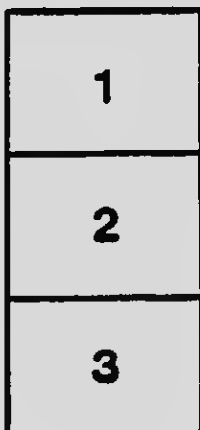
Bibliothèque nationale du Canada

Les images suivantes ont été reproduites avec le plus grand soin, compte tenu de la condition et de la netteté de l'exemplaire filmé, et en conformité avec les conditions du contrat de filmage.

Les exemplaires originaux dont la couverture en papier est imprimée sont filmés en commençant par la première page et en terminant soit par la dernière page qui comporte une empreinte d'impression ou d'illustration, soit par la seconde page, selon le cas. Tous les autres exemplaires originaux sont filmés en commençant par la première page qui comporte une empreinte d'impression ou d'illustration et en terminant par la dernière page qui comporte une telle empreinte.

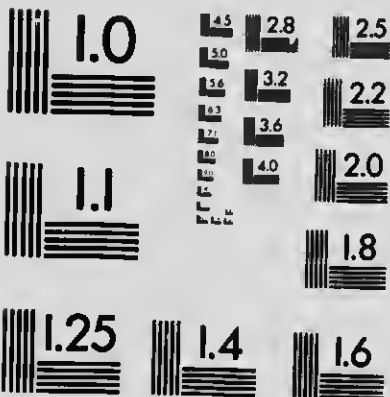
Un des symboles suivants apparaît sur la dernière image de chaque microfiche, selon le cas: le symbole \rightarrow signifie "A SUIVRE", le symbole ∇ signifie "FIN".

Les cartes, planches, tableaux, etc., peuvent être filmés à des taux de réduction différents. Lorsque le document est trop grand pour être reproduit en un seul cliché, il est filmé à partir de l'angle supérieur gauche, de gauche à droite, et de haut en bas, en prenant le nombre d'images nécessaire. Les diagrammes suivants illustrent la méthode.



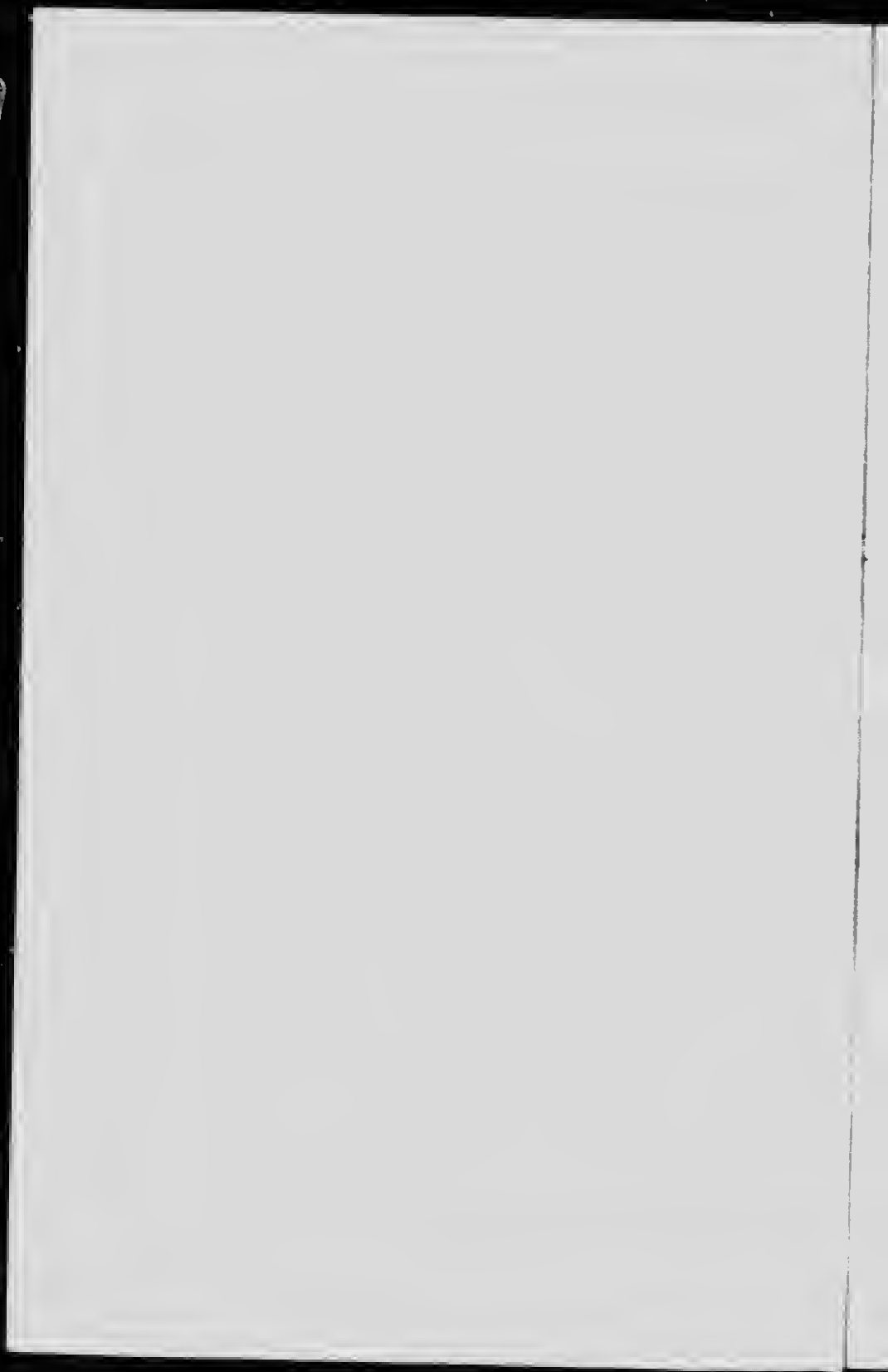
MICROCOPY RESOLUTION TEST CHART

(ANSI and ISO TEST CHART No. 2)



APPLIED IMAGE Inc

1653 East Main Street 14609 USA
Rochester, New York
(716) 482 - 0300 - Phone
(716) 288 - 5989 - Fax



PROSPECTUS

**United Empire Bank
of Canada**

HEAD OFFICE
TORONTO, ONT.

(The Charter of The Pacific Bank of Canada has been acquired and application made to Parliament for authority to change the name to United Empire Bank of Canada, also to increase the Capital from \$2,000,000 to \$5,000,000.)

CAPITAL . . .	\$ 5,000,000
PRESENT ISSUE	2,000,000

20,000 SHARES OF \$100 PER SHARE
ISSUED AT PAR

APPLICATIONS FOR STOCK SHOULD BE MADE TO
MR. GEORGE P. REID, SECRETARY, LAWLOR BUILDING,
CORNER KING AND YONGE STREET,
TORONTO, ONT.

HG

2710

.T745

THE FOLLOWING GENTLEMEN HAVE
CONSENTED TO ACT AS DIRECTORS

- SAMUEL BARKER, ESQ., M.P., HAMILTON
Director The Landed Banking and Loan Co.
- MARK BREDIN, ESQ., TORONTO
President The Bredin Bread Co., Limited, Toronto.
- GEORGE A. CLARE, ESQ., M.P., PRESTON
President Clare Bros. & Co., Limited.
- E. E. A. DUVERNET, ESQ., TORONTO
Of the firm DuVernet, Jones, Ross and Ardagh, Barristers.
- LT.-COL. F. T. C. DUVERNET, LONDON
7 Sloane Street, London, England.
- REV. T. C. STREET MACKLEM, D.D., TORONTO
Provost and Vice-Chancellor of Trinity College, Toronto.
- STANLEY MARLING, ESQ., J.P., STROUD
Stanley Park, Stroud, Gloucestershire, England.
- M. McLAUGHLIN, ESQ., TORONTO
Member of the late firm M. McLaughlin & Co., Millers, Toronto.
- BENNETT ROSAMOND, ESQ., ALMONTE
President and Managing Director The Rosamond
Woolen Co., Almonte.
- WILLIAM J. SMITH, ESQ., TORONTO
President and Manager J. B. Smith & Sons, Limited, Lumber
Merchants, Toronto.

SOLICITORS

MESSRS. DUVERNET, JONES, ROSS & ARDAGH
Temple Building, Toronto

157583



UNITED EMPIRE BANK OF CANADA

The remarkable advance made by the Dominion of Canada during the past five years, and the great development of its natural resources, have been so significant, as to attract the attention of capitalists and investors at the financial centres of two continents.

It may very properly be said that no new country at a similar stage in its history, not excepting the United States, has given such promise of commercial greatness and material prosperity. Canadian securities—Government, Railway, Financial and Land—occupy a very high position in the stock markets of the world.

A notable feature of the past five years has been the growth of the trade between the Mother Country and Canada. The very certain prospect of increasing trade

UNITED EMPIRE BANK OF CANADA

relations—with the probability of their being further encouraged by a closer union—the much more active interest in the Dominion now being taken by the capitalists of Great Britain and the tide of improved immigration now making for Canadian shores, suggest that the time is most suitable for the establishment of a bank which shall not merely realize success in its operations from the actual needs of the Dominion, but shall emphasize the rapidly growing commercial relations within the empire.

The United Empire Bank of Canada will operate throughout Canada with an office in London, England, and later, if the occasion demands, at other large centres in Great Britain.

While being a thoroughly Canadian

their
closer
rest in
y the
e tide
ng for
me is
t of a
e suc-
actual
mpha-
rela-

Canada
th an
ter, if
large
adian

institution under Canadian management, its Directorate will include three or more prominent financiers of London, England.

Although the Provisional Executive have already received offers of large subscriptions for stock from English investors, it is intended to limit the holdings of any one person or corporation, and to secure the greater portion of its share capital in Canada in as widely distributed holdings as possible.

While there have been since 1900 three new banks established in active operation in Canada, all of which are meeting with success, there are fewer banks in existence in 1905 than there were in 1890.

Canada is fortunate in possessing a banking system which, in legislative safe-

UNITED EMPIRE BANK OF CANADA

guarding, is unsurpassed by that of any country in the world. The regulations of the Canadian "Bank Act" provide for the fullest security to the investor in bank shares.

The conditions precedent to the establishment of a new institution are now of so stringent a character as to prevent any but a responsible organization from undertaking the banking business.

The currency system by its elasticity avoids "money trouble."

No business possesses the same safety.

No business has been more uniformly profitable.

A bank begins to earn profits for its shareholders from the outset.

Its capital is not laid out in plant and

stock like a new industrial or mercantile business.

During the past ten years the actual returns of Canadian banks to their stockholders, after setting aside a portion of their annual profits as a reserve fund, have ranged from six to twelve per cent.

During the past three years the earnings have averaged fifteen per cent. per annum per institution.

The prices of bank shares in Canada are most significant, ranging from 125 to 300 per hundred of par value, with the exception of a very few institutions whose stocks are not actively dealt in or quoted on the regular exchanges, but every one of which is paying regular dividends on its capital, and accumulating a reserve fund.

Owing to the rapidly increasing needs

UNITED EMPIRE BANK OF CANADA

of the country nearly every bank in Canada, whose existence precedes 1900, has been called upon to largely increase its capital in the past ten years. The new stock has been offered in almost every case at a high premium and under the regulations of the Bank Act must necessarily be first offered to the existing shareholders. The opportunity of investing in bank shares can be obtained by the general public only by purchase in the open market at the high current prices.

The Directors of the United Empire Bank of Canada will be men selected with a view to their business capacity and financial ability. While they will be men of means and thoroughly representative, special regard will be paid to their fitness and capability for the position.

CANADA

UNITED EMPIRE BANK OF CANADA

The General Manager will be Mr. George P. Reid, for ten years General Manager of The Standard Bank of Canada. The success of this institution under his management has been widely recognized. Mr. Reid possesses an enviable reputation as being a sound and conservative banker.

Shares will be \$100. par value. As preliminary expenses will be kept within very small limits, it is not considered necessary to issue the stock at a premium.

The terms of subscription will be \$10 per share on allotment, \$10 per share on the first day of the month immediately following the date of allotment, \$10 per share every month thereafter on the first day of the month until the whole amount is paid.

UNITED EMPIRE BANK OF CANADA

Interest at the rate of *four* per cent. per annum, up to the date fixed for payment, will be allowed on payments made in advance.

The Provisional Directors reserve the right to reject or allot any subscription in whole or in part.

Applications for stock should be made to Mr. George P. Reid, Secretary, Lawlor Building, Corner King and Yonge Streets, Toronto, Ontario.

Cheques, drafts, money orders and other remittances on account of subscriptions for stock should be made payable to Samuel Barker and George P. Reid.

ADA

UNITED EMPIRE BANK OF CANADA

Growth of the Banks and Banking Business in Canada

	1890	1904
Deposits . .	\$135,548,704	\$470,265,744

In 1905 deposits will reach close on to \$550,000,000 or an increase of 400 per cent. in sixteen years.

	1890	1904
Bank Assets	\$254,546,329	\$695,417,756

In 1905 over \$730,000,000, an increase in twelve years of over 100 per cent.

	1890	1904
Bank Capital. .	\$59,974,902	\$79,234,191

In 1905, \$81,613,513

	1893	1905
Reserve Funds .	\$25,837,753	\$54,908,000

or an increase of over 100 per cent.

	1893	1904
Notes in Circulation . . .	\$33,811,925	\$60,098,480

UNITED EMPIRE BANK OF CANADA

Of 33 banks, 1 Stock is quoted above 300 ; 10 Stocks from 200 to 275 ; 13 Stocks from 125 to 175.

The others are small institutions whose stocks are not actively dealt in or quoted on regular exchanges.

Between the years 1869 and 1901 five new Banks were organized in Ontario. The prices of the stock and dividends paid as of October 2nd, 1905, is :

	Stock issued per share.	Market price October, 1905.	Last dividend paid per annum.
The Dominion Bank .	\$100	\$270	10%
The Bank of Hamilton	100	224	10%
The Standard Bank . .	100	230	10%
The Bank of Ottawa .	100	226	9%
The Traders' Bank . .	100	143	6%

Investors who bought the original stock in these banks had an average return on their investments varying from six to twelve per cent. per annum, while the price of the stock in the market to-day adds largely to their original capital should they require to realize.

Growth of Canadian Trade

A few statistics indicative of the advances made by the Dominion of Canada in the past fifteen years have important bearing on the Banking field.

The trade of the Dominion has more than doubled in fifteen years.

	1890	1904
Imports . . .	\$112,765,584	\$251,464,332
Exports . . .	96,749,149	213,521,235
Imports from	1890	1904
Great Britain	\$43,390,241	\$61,777,574
Exports to		
Great Britain	48,353,694	117,591,376

Earnings of railways have more than doubled.

Railway	1890	1904
Earnings . . .	\$46,843,826	\$96,064,527

The earnings for 1905 will considerably exceed \$100,000,000.

d above
75 ; 13

s whose
quoted

901 five
Ontario.
dividends

arket	Last
ce	dividend
ber,	paid per
5.	annum.
0	10%
4	10%
0	10%
6	9%
3	6%

original
average
ng from
m, while
market
nal capi-

200164

UNITED EMPIRE BANK OF CANADA

Savings bank deposits, or other than regular bank deposits, show an increase of sixty per cent.

	1890	1904
Total deposits	\$69,815,019	\$105,180,235

Manitoba and the North West Territories are rapidly fulfilling the prophecy that they will make Canada the "Granary of the Empire." The wheat crop for 1905 of this section of the country, conservatively estimated, will show a yield of 90,000,000 bushels, largely of highly graded wheat.

In 1904 the total yield was 59,608,458 bushels.

The opening up of new areas, the diversity of soil and climate, the increased acreage of other grains than wheat, and the improved methods of farming, give assurance of constant and increasing harvests in the future.

157583

UNIVERSITY OF WINDSOR LIBRARY

ANADA

r than
crease

04
80,235

Terri-
ophecy
ranary

or 1905
atively

00,000
wheat.

08,458

as, the
creased
at, and
g, give
ng har-



